



NARIA
SECURITY

LITEFENCE EASY

SECURITY DEVICE OVER PLASTIC OPTICAL FIBER FOR
PERIMETER PROTECTION

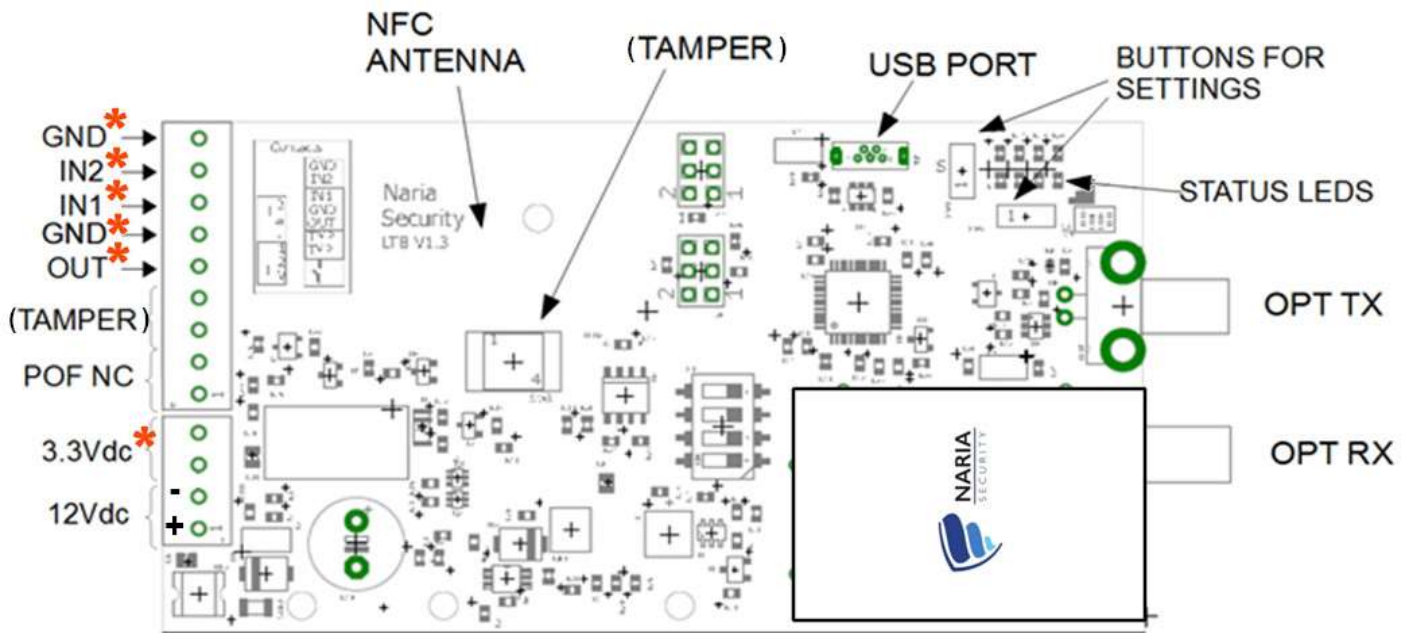
DATASHEET



LiteFENCE EASY
analyser (Tx+Rx)
LFEN300F11ES



Reference figures



*These connectors are for future functions

The board is normally in an IP55 casing with mechanical opening sensor, so the tamper sensor on the board is not used.

Technical specifications

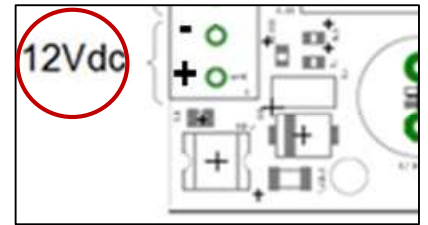
LiteSUN Plus EASY

Protection rate	IP55
Operating range	0-150m (max 15dB) <small>In real installations, there is 1 bolt every 10m of fiber: this attenuates the transmission of the signal partially, so the max. operating range of LiteFENCE EASY is reduced to about 125m.</small>
Optical power budget	15dB
Alarm relay output	2A/220 Vdc NC
Power (DC)	12VDC
Operating temperature	-20°+70°C
Humidity	from 5 to 90%
Consumption at 12VDC	70mA
Anti-tampering sensor	mechanical
Weight and dimensions in IP55 casing	670g 210x160x85mm
Optical connector	FSMA plug-in connectors
Immunity to EMI/RFI	EMC 2004/108/CE

How to connect the fiber to the board and power it.

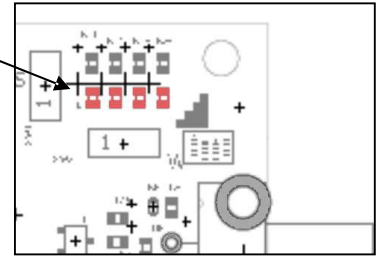
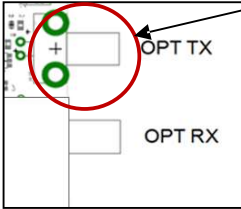
Connect the board to power.

To avoid damaging the board, make sure it is not powered before touching and handling it.



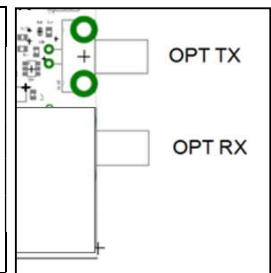
Power: 12Vdc Consumption: 70mA

When you connect the board to power, the status LEDs will twinkle and the LED on the transmission port will glow.



TIP:

First insert one end of the fiber into the TX port: you will see vivid green light coming out of the other end. If not, there will probably be an installation mistake: make sure that the fiber cable is installed correctly, no overtightened cable ties, nothing pressing the fiber, no sharp bends... Then connect the other end to the RX port: the analyser sets up automatically in 30 seconds and is fully operative: all status LEDs are off.

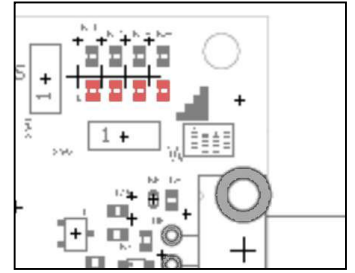


From this moment on, the transmission port (TX) emits a codified light signal which runs through the plastic optical fiber and arrives at the receiving port (RX). The analyser will continually control the power of the signal received. When the device detects a difference in power, due to cable cut or bends on the fiber, an alarm will go off.

Status LEDs

The analyser is in alarm status whenever the fiber is cut, bent or stretched out. When there is an alarm, the status LEDs twinkle and the alarm lasts 40 seconds (i.e. alarm contact remains open for 40 seconds). If the fiber cable is cut, LEDs will go on twinkling until the cable is repaired and the loop closed.

The status LEDs also twinkle when the fiber loop is not closed. When the board is normally operative, the status LEDs are off.



Buttons for settings

The board parameters are already set: the system is “plug & play” and pre-set values are suitable for most cases.

Button “A” controls sensitivity.

Press once to see current sensitivity: a steady LED glows as listed below.

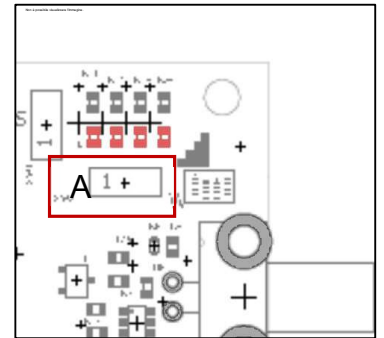
x000= low sensitivity

0x00= medium low sensitivity

00x0= medium high sensitivity (default, used in most cases)

000x= high sensitivity

Press twice to change sensitivity



Button B controls time window.

Press once to see current time window. a LED twinkles as listed below.

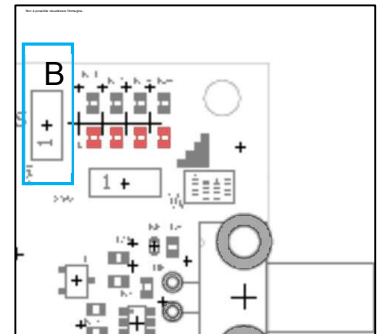
x000= long

0x00= medium-long
(default)

00x0= medium-short

000x= short

Press twice to change time window*.



***Before changing any default settings for time window,
please contact Naria Security!**

